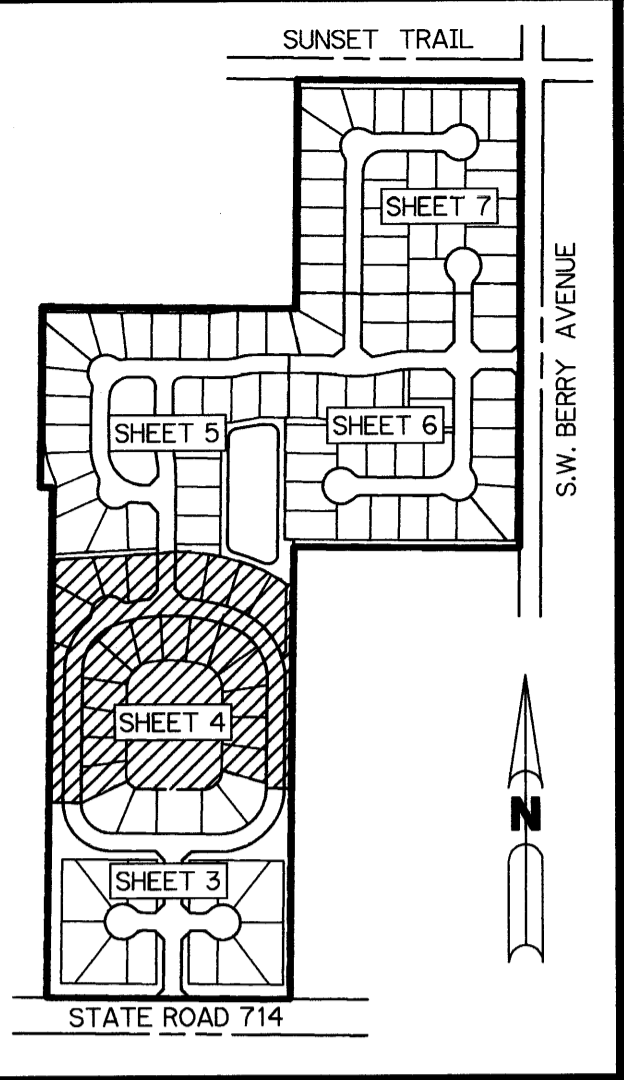


Sheet 4 of 7
 Plat Book 13
 Page 44
 File # 1122609
 Date: 7-21-95

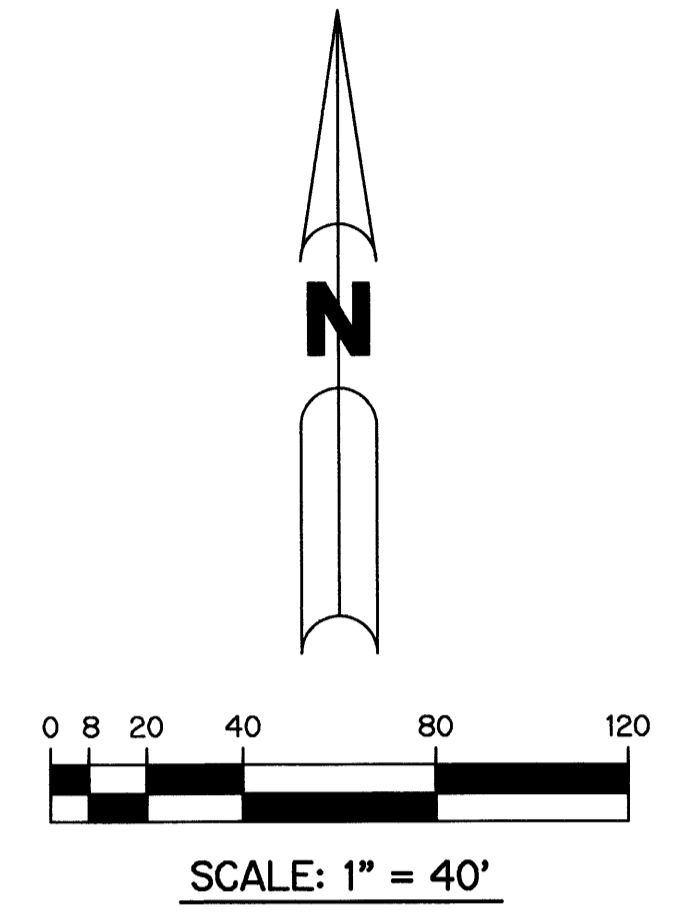
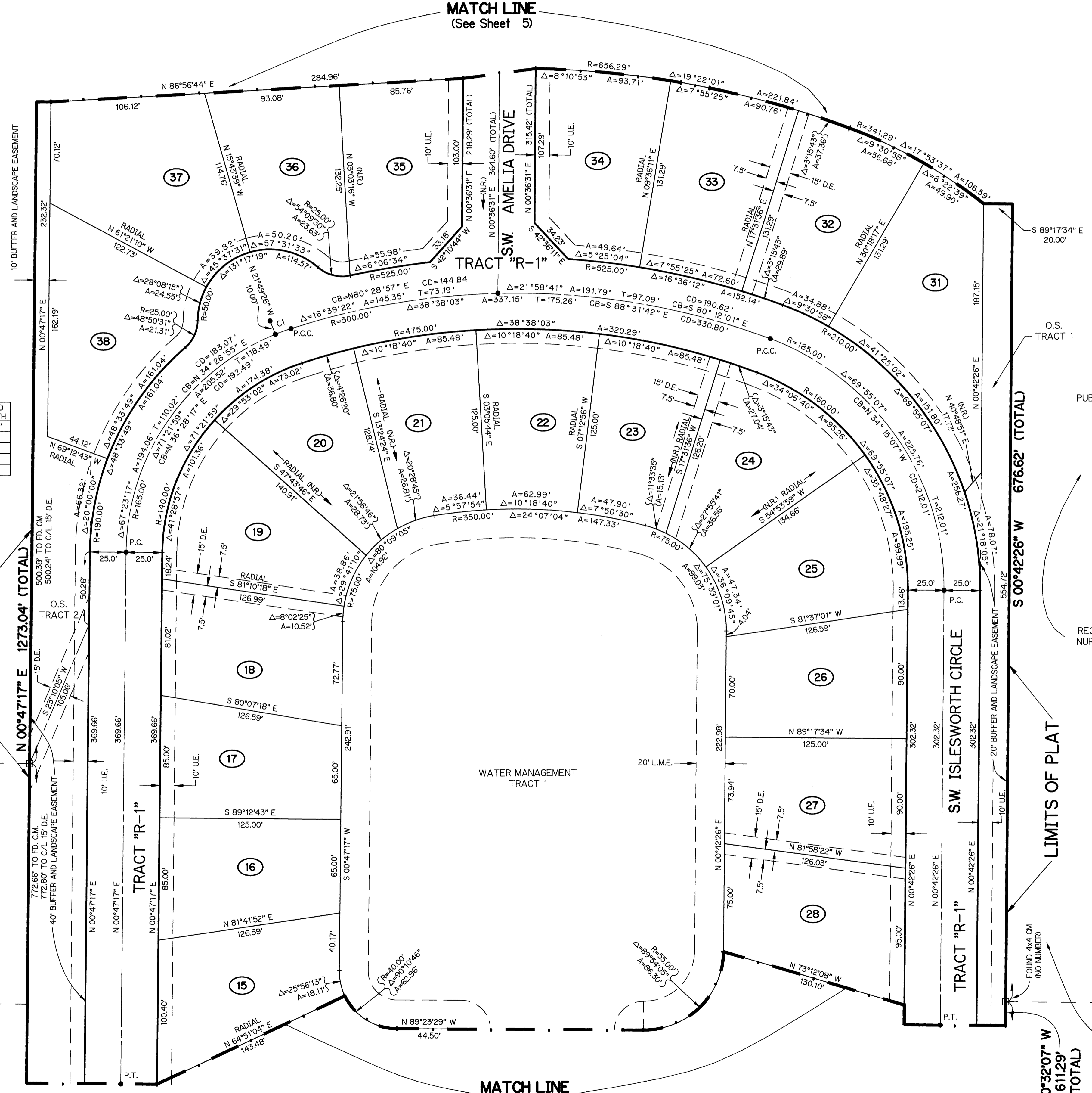
MARTIN DOWNS P.U.D. PARCEL 44 - PLAT No. 68 - ISLESWORTH

LYING IN SECTION 13, TOWNSHIP 38 SOUTH, RANGE 40 EAST, MARTIN COUNTY, FLORIDA
 AND BEING A REPLAT OF TRACTS 33, 47, 48 AND 50 AND PART OF TRACTS 46 AND 63 PLAT OF PALM CITY FARMS, RECORDED IN PLAT BOOK 6, PAGE 42,
 PUBLIC RECORDS OF PALM BEACH COUNTY, FLORIDA, (NOW MARTIN COUNTY)

SHEET 4 OF 7 APRIL, 1995



KEY MAP
 N.T.S.



TRACT 49
 PLAT OF PALM CITY FARMS
 P.B. 6, PAGE 42
 PUBLIC RECORDS OF PALM BEACH COUNTY, FLORIDA
 (NOW MARTIN COUNTY, FLORIDA)

CENTER LINE CURVE DATA

CURVE NO.	RADIUS	DELTA (Δ)	ARC LENGTH	TANGENT	CHORD BEARING	CHORD LENGTH
C1	165.00'	03°58'42"	11.46'	5.73'	N 70°09'55" E	11.45'

- LEGEND:
- - PERMANENT REFERENCE MONUMENT, PLS #3864
 - - PERMANENT REFERENCE MONUMENT, LB #959
 - - PERMANENT CONTROL POINT, PLS #3864
 - Δ - DELTA ANGLE
 - R - RADIUS
 - A - ARC LENGTH
 - T - TANGENT LENGTH
 - P.T. - POINT OF TANGENCY
 - P.C. - POINT OF CURVATURE
 - P.R.C. - POINT OF REVERSE CURVE
 - P.C.C. - POINT OF COMPOUND CURVE
 - C.B. - CHORD BEARING
 - CH.D. - CHORD LENGTH
 - U.E. - UTILITY EASEMENT
 - D.E. - DRAINAGE EASEMENT
 - L.A.E. - LIMITED ACCESS EASEMENT
 - L.B. - LANDSCAPE BUFFER
 - W.M.E. - WATER MANAGEMENT EASEMENT
 - L.M.E. - LAKE MAINTENANCE EASEMENT
 - N.R. - NOT RADIAL
 - N.T.S. - NOT TO SCALE
 - O.R.B. - OFFICIAL RECORD BOOK
 - P.B. - PLAT BOOK
 - P.G.S. - PAGES
 - P.L.S. - PROFESSIONAL LAND SURVEYOR
 - P.R.M. - PERMANENT REFERENCE MONUMENT
 - S.T. - SURVEY TIE
 - TYP. - TYPICAL
 - COR. - CORNER
 - N.R. - NON RADIAL
 - OS - OPEN SPACE
 - ⊕ - CENTERLINE

- NOTES
- THERE SHALL BE NO BUILDING OR ANY OTHER KIND OF CONSTRUCTION OR TREES OR SHRUBS PLACED ON DRAINAGE EASEMENTS.
 - THERE SHALL BE NO BUILDING OR OTHER PERMANENT STRUCTURES OR TREES OR SHRUBS ON UTILITY EASEMENTS.
 - BEARING BASE - THE SOUTH LINE OF THE SOUTHEAST QUARTER OF SECTION 13-38-40 IS TAKEN AS BEING SOUTH 89°23'29" EAST AND ALL OTHER BEARINGS ARE RELATIVE THERETO.
 - NOTICE: THERE MAY BE ADDITIONAL RESTRICTIONS THAT ARE NOT RECORDED ON THIS PLAT THAT MAY BE FOUND IN THE PUBLIC RECORDS OF MARTIN COUNTY.

THIS INSTRUMENT PREPARED BY
 MICHAEL T. KOLODZIEJCZYK P.L.S. 3864 STATE OF FLORIDA
 LAWSON, NOBLE AND ASSOCIATES, INC.
 ENGINEERS PLANNERS SURVEYORS
 PORT ST. LUCIE, FLORIDA

REGENCY PALMS NURSING CENTER

TRACT 64

TRACT 51
 PLAT OF PALM CITY FARMS
 P.B. 6, PAGE 42
 PUBLIC RECORDS OF PALM BEACH COUNTY, FLORIDA
 (NOW MARTIN COUNTY, FLORIDA)

TRACT 62